



1150 Connecticut Ave. NW, 12th floor, Washington, DC 20036

USA Hide Supply Situation 2014

All cattle and calves in the United States as of January 1, 2015 totaled 89.8 million head, 1 percent above the 88.5 million on January 1, 2014.

All cows and heifers that have calved, at 39.0 million, were up 2 percent from the 38.3 million on January 1, 2014. Beef cows, at 29.7 million, were up 2 percent from January 1, 2014. Milk cows, at 9.3 million, were up 1 percent from January 1, 2014.

Other class estimates on January 1, 2015 and the change from January 1, 2014, are as follows:

- All heifers 500 pounds and over, 19.2 million, up 1 percent.
- Beef replacement heifers, 5.8 million, up 4 percent.
- Milk replacement heifers, 4.6 million, up 1 percent.
- Other heifers, 8.8 million, down slightly.
- Steers weighing 500 pounds and over, 15.8 million, up 1 percent.
- Bulls weighing 500 pounds and over, 2.1 million, up 3 percent.
- Calves under 500 pounds, 13.7 million, up 1 percent.

Cattle and calves on feed for slaughter in all feedlots was 13.1 million, up 1 percent. The combined total of calves under 500 pounds, and other heifers and steers over 500 pounds outside of feedlots was 25.2 million, up 1 percent.

The 2014 calf crop was estimated at 33.9 million head, up slightly from 2013 and an early indication of herd expansion in the U.S.

U.S. cattle imports are expected to have been 2.325 million head in 2014 due to rising shipments from both Canada and Mexico. U.S. beef imports continue to grow, especially from Australia. The beef import estimate for 2014 was raised to 2.928 billion pounds, which would be the highest total since 2007.

Commercial cattle slaughter in the U.S. for 2014 totaled 30.170 million head, about 7% below 2013 levels. Slaughter is expected to decline slightly further in 2015 as the U.S. herd rebuilds.

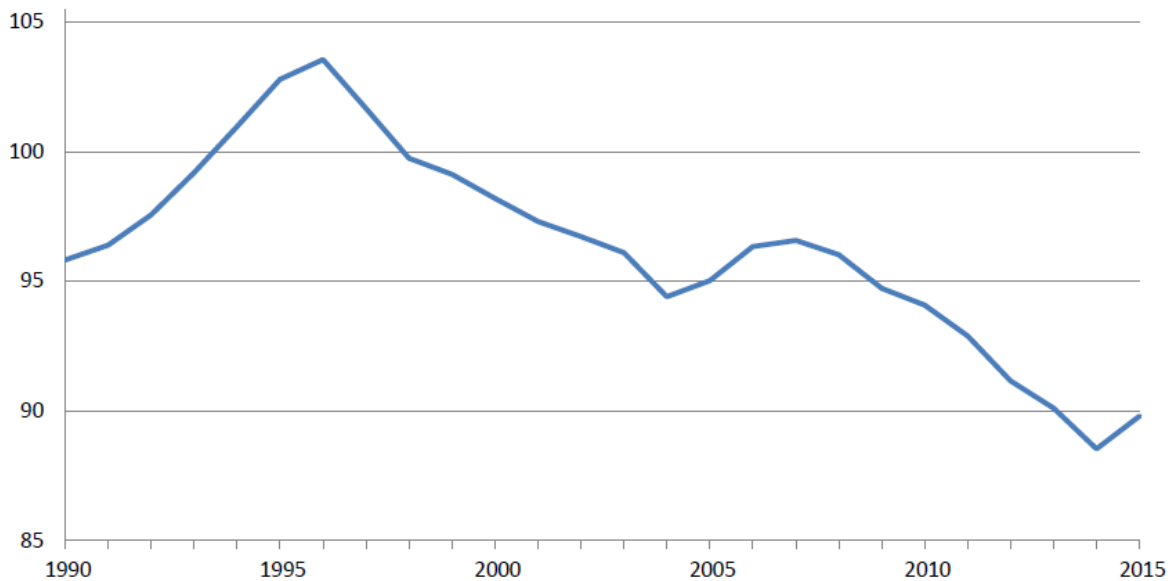
Commercial red meat production in 2014 was 47.3 billion pounds, down 4 percent from 2013. Accumulated beef production was down 6 percent from last year, veal was down 16 percent, pork was down 1 percent from last year, and lamb and mutton production was down slightly.

According to U.S. Department of Agriculture statistics, U.S. exports of wet salted cattle hides dropped slightly to \$1.8 billion in value, a 1.2% decrease from 2013 levels. However, exports of wet blue cattle hides, jumped 21% to over \$959 million in value. Export data for specific markets is included in the tables below.

USHSLA noticed significant errors in USDA's data regarding quantities of hides, skins and wet blue products exported, therefore the quantities listed in the table below should be disregarded until the problem has been remedied. This is a multi-year problem with regard to piece counts.

Cattle Inventory – United States: January 1

Million head



Export Numbers for U.S. Bovine Fresh/Wet Salted Hides
Number of Pieces/Thousand \$U.S.*

	Number of Pieces			Value Thousand \$		
	Jan. - Dec 2013	Jan. - Dec 2014	% Chg	Jan. - Dec 2013	Jan. - Dec 2014	% Chng
World	36,782,160	23,903,417	-35.0%	1,860,115	1,837,258	-1.2%
China/HK	22,310,155	14,678,203	-34.2%	1,185,488	1,195,314	0.8%
Korea	6,184,382	3,567,735	-42.3%	322,047	290,348	-9.8%
Taiwan	2,143,849	1,493,555	-30.3%	104,387	108,903	4.3%
Mexico	1,686,039	1,490,400	-11.6%	78,538	96,421	22.8%
EU-28	1,837,795	1,434,380	-22.0%	61,561	69,935	13.6%
Japan	807,902	431,166	-46.6%	28,702	26,198	-8.7%
Thailand	550,131	279,479	-49.2%	23,292	23,557	1.1%
Vietnam	662,045	147,748	-77.7%	34,231	9,609	-71.9%
Turkey	231,584	135,358	-41.6%	7,157	6,372	-11.0%
Indonesia	80,795	42,132	-47.9%	6,064	3,827	-36.9%
Canada	72,921	38,434	-47.3%	4,217	2,170	-48.5%
Pakistan	30,321	20,141	-33.6%	448	1,110	147.8%
Israel	91,471	70,243	-23.2%	1,025	1,088	6.1%
Colombia	7,008	25,576	265.0%	198	820	314.1%
Dom. Rep.	9,727	9,331	-4.1%	394	480	21.8%
India	44,380	23,640	-46.7%	1,366	449	-67.1%
Bosnia	0	2,160	-	0	209	-
Kazakhstan	0	1,697	-	0	196	-
Singapore	518	1,878	262.5%	16	59	268.8%
Philippines	3,318	7,000	111.0%	149	59	-60.4%
Bahamas	730	722	-1.1%	36	49	36.1%
Brazil	0	900	-	0	36	-
UAE	331	1,165	252.0%	10	21	110.0%
Australia	800	170	-78.8%	24	10	-58.3%
Malaysia	100	65	-35.0%	3	6	100.0%
Costa Rica	32	34	6.3%	3	3	0.0%
Honduras	0	105	-	0	3	-

Export Numbers for U.S. Pig Skins

Number of Pieces/Thousand \$U.S.

	Number of Pieces			Value Thousand \$		
	Jan. - Dec 2013	Jan. - Dec 2014	% Chg	Jan. - Dec 2013	Jan. - Dec 2014	% Chng
World Total	5,329,165	6,780,208	27%	57,493	54,976	-4%
Mexico	2,523,738	2,521,508	0%	30,324	26,715	-12%
Taiwan	1,470,387	3,321,775	126%	13,918	18,864	36%
Thailand	425,200	418,776	-2%	4,241	4,398	4%
Korea	0	182,460	-	0	1,804	-
EU-28	161,235	152,953	-5%	1,759	1,355	-23%
Vietnam	643,800	105,899	-84%	6,417	1,029	-84%
China/HK	27,997	68,853	146%	329	675	105%
Japan	72,125	6,580	-91%	460	123	-73%
Colombia	0	1,404	-	0	14	-

Export Numbers for U.S. Wet Blue Hides

Number of Pieces/Thousand \$U.S.**

	Number of Pieces			Value Thousand \$		
	Jan. - Dec 2013	Jan. - Dec 2014	% Chg	Jan. - Dec 2013	Jan. - Dec 2014	% Chng
World Total	14,115,505	10,229,882	-28%	790,031	959,484	21%
China/HK	4,885,727	3,947,028	-19%	281,530	374,997	33%
EU-28	3,382,781	2,369,852	-30%	195,836	234,643	20%
Vietnam	1,175,822	1,139,798	-3%	69,879	98,373	41%
Taiwan	713,663	583,829	-18%	43,298	54,811	27%
Mexico	1,742,259	714,199	-59%	58,407	52,192	-11%
Thailand	600,264	503,739	-16%	40,297	46,360	15%
Dom. Rep.	636,630	378,038	-41%	37,839	39,801	5%
Korea	684,104	283,320	-59%	46,840	26,820	-43%
Uruguay	29,904	121,459	306%	2,540	12,348	386%
Japan	133,952	111,338	-17%	6,536	11,542	77%
India	94,751	74,503	-21%	5,347	7,283	36%
El Salvador	0	1,334	-	0	130	-