



USHSLA INFO EXCHANGE

Export Numbers for U.S. Bovine Fresh/Wet Salted Hides Number of Pieces/Thousand \$U.S.*

	Number of Pieces*			Value Thousand \$		
	Jan - Dec 2014	Jan - Dec 2015	% Chg	Jan - Dec 2014	Jan - Dec 2015	% Chng
World	22,577,685	19,153,371	-15%	1,836,928	1,477,471	-20%
China/HK	13,858,367	11,935,263	-14%	1,195,230	953,707	-20%
Korea	3,332,055	3,059,165	-8%	290,870	254,317	-13%
Mexico	1,453,588	1,453,844	0%	96,406	83,658	-13%
Taiwan	1,385,343	713,586	-48%	108,443	60,583	-44%
EU-28	1,363,247	827,315	-39%	69,520	45,772	-34%
Thailand	267,729	352,642	32%	23,578	27,593	17%
Japan	413,787	173,959	-58%	26,449	17,155	-35%
Vietnam	130,208	221,399	70%	9,609	16,612	73%
Indonesia	42,132	61,648	46%	3,827	3,996	4%
Turkey	131,508	107,274	-18%	6,305	3,795	-40%
Canada	38,434	60,294	57%	2,170	3,141	45%
India	23,640	55,539	135%	449	1,456	224%
Bosnia	1,320	16,210	1128%	128	1,226	858%
Israel	67,543	36,745	-46%	1,088	870	-20%
Costa Rica	34	29,603	86968%	3	847	28133%
Pakistan	20,141	23,916	19%	1,110	830	-25%
Cambodia	0	7,732	-	0	793	-
Dom. Rep.	9,331	7,823	-16%	480	580	21%
Chile	0	2,720	-	0	178	-
Brazil	900	1,880	109%	36	124	244%
Australia	170	1,253	637%	10	104	940%
Uruguay	0	946	-	0	28	-
Tunisia	0	675	-	0	22	-
Norway	0	307	-	0	21	-
Haiti	0	776	-	0	14	-
Bahamas	722	150	-79%	49	13	-73%
Philippines	7,000	179	-97%	59	12	-80%
Colombia	25,576	170	-99%	820	12	-99%
Guatemala	0	314	-	0	9	-
Panama	0	44	-	0	4	-

PLEASE NOTE: In the past, the Number of Pieces column was inaccurate, typically over-inflating the actual amounts exported. In 2015, the US Government made changes to its reporting system, which we are hopeful will fix this problem. [CLICK HERE](#) for more information.

Export Numbers for U.S. Pig Skins

Number of Pieces/Thousand \$U.S.

	Number of Pieces			Value Thousand \$		
	Jan - Dec 2014	Jan - Dec 2015	% Chg	Jan - Dec 2014	Jan - Dec 2015	% Chng
World Total	6,753,208	5,875,489	-13%	54,768	39,220	-28%
Mexico	2,520,208	2,293,190	-9%	26,711	19,457	-27%
Taiwan	3,314,575	3,070,688	-7%	18,832	15,234	-19%
Thailand	434,476	306,333	-29%	4,555	2,303	-49%
EU-28	152,953	86,550	-43%	1,355	954	-30%
China/HK	68,853	75,533	10%	675	693	3%
Cambodia	0	11,436	-	0	180	-
Korea	182,460	17,544	-90%	1,804	176	-90%
Vietnam	71,699	10,279	-86%	701	162	-77%
Japan	5,945	3,936	-34%	117	62	-47%

Export Numbers for U.S. Wet Blue Hides

Number of Pieces/Thousand \$U.S.**

	Number of Pieces*			Value Thousand \$		
	Jan - Dec 2014	Jan - Dec 2015	% Chg	Jan - Dec 2014	Jan - Dec 2015	% Chng
World Total	9,702,793	7,508,196	-23%	959,716	752,628	-22%
China/HK	3,749,436	2,746,756	-27%	374,825	267,649	-29%
EU-28	2,265,727	1,758,176	-22%	234,105	181,603	-22%
Vietnam	1,068,168	927,805	-13%	98,373	96,259	-2%
Taiwan	547,295	517,337	-5%	54,811	52,108	-5%
Mexico	669,762	523,616	-22%	53,267	46,270	-13%
Korea	261,186	370,937	42%	26,688	36,845	38%
Thailand	480,102	259,799	-46%	46,360	29,560	-36%
Dom. Rep.	359,901	256,640	-29%	39,801	28,147	-29%
Japan	108,381	90,694	-16%	11,542	8,712	-25%
India	72,407	54,189	-25%	7,283	5,235	-28%
Argentina	0	1,547	-	0	180	-
Uruguay	117,649	675	-99%	12,348	57	-100%
Australia	0	25	-	0	3	-

PLEASE NOTE: In the past, the Number of Pieces column was inaccurate, typically over-inflating the actual amounts exported. In 2015, the US Government made changes to its reporting system, which we are hopeful will fix this problem. [CLICK HERE](#) for more information.

Cattle on Feed Summary

National Agricultural Statistics Service, USDA

(Available Here)

Released January 22, 2016

United States Cattle on Feed Down Slightly

Cattle and calves on feed for the slaughter market in the United States for feedlots with capacity of 1,000 or more head totaled 10.6 million head on January 1, 2016. The inventory was slightly below January 1, 2015. The inventory included 7.16 million steers and steer calves, up 3 percent from the previous year. This group accounted for 68 percent of the total inventory. Heifers and heifer calves accounted for 3.41 million head, down 7 percent from 2015. January 1, 2016 heifers and heifer calves inventory is the lowest percent of total January inventory since the series began in 1996.

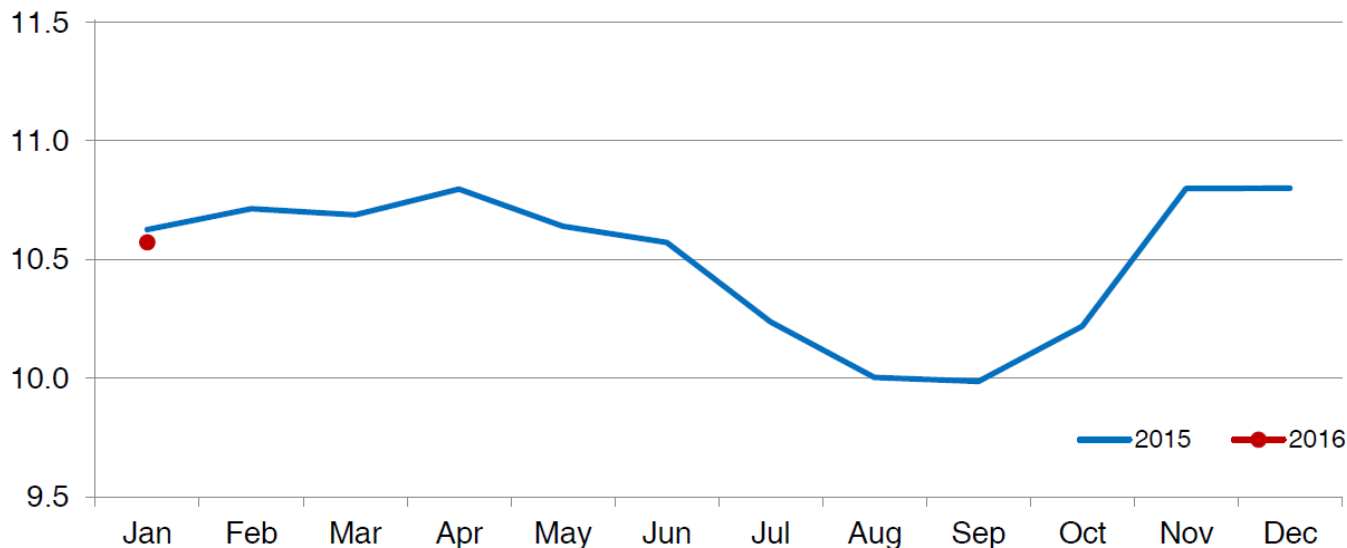
Placements in feedlots during December totaled 1.53 million head, 1 percent below 2014. Net placements were 1.45 million head. During December, placements of cattle and calves weighing less than 600 pounds were 375,000 head, 600-699 pounds were 355,000 head, 700-799 pounds were 355,000 head, and 800 pounds and greater were 440,000 head.

Marketings of fed cattle during December totaled 1.67 million head, 1 percent above 2014.

Other disappearance totaled 78,000 head during December, 8 percent above 2014.

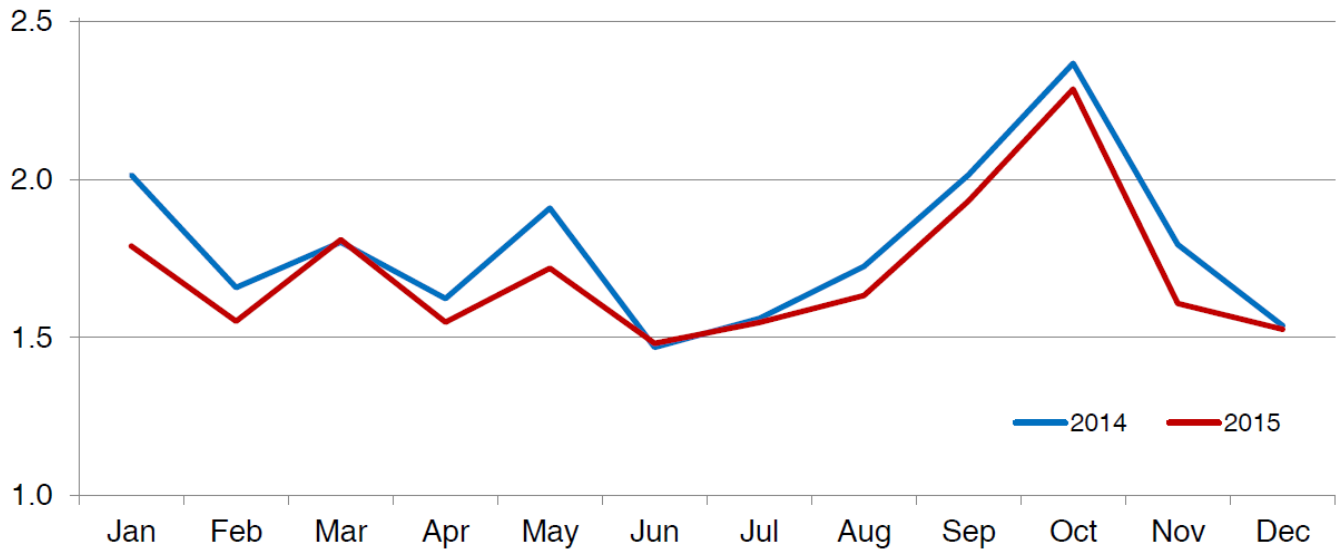
Cattle on Feed Inventory on 1,000+ Capacity Feedlots – United States

Million head



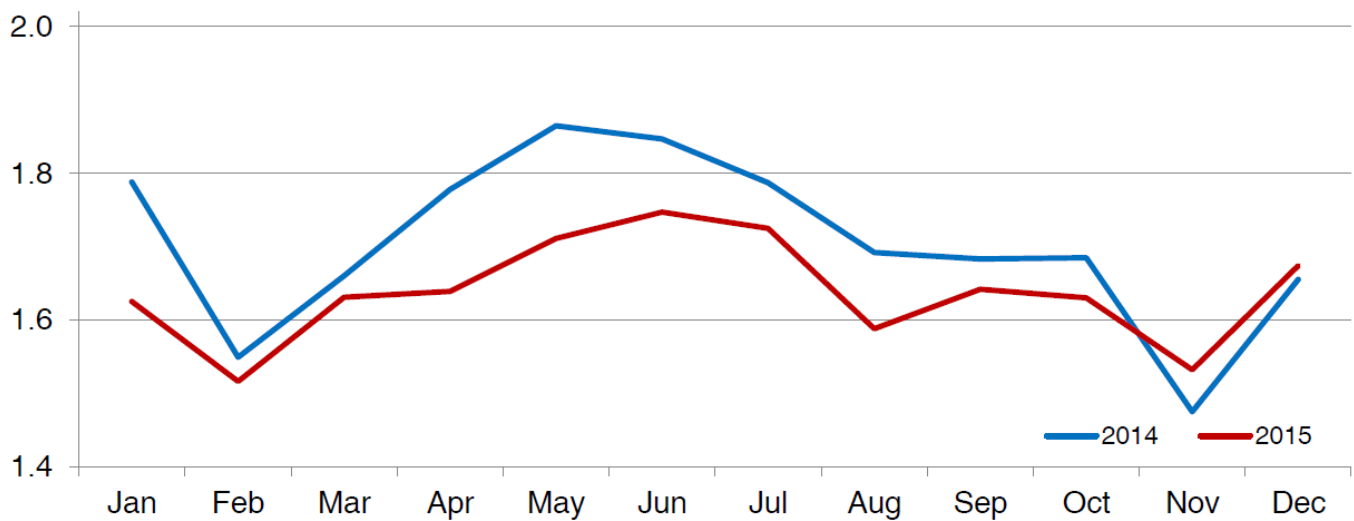
Number of Cattle Placed on 1,000+ Capacity Feedlots – United States

Million head



Number of Cattle Marketed on 1,000+ Capacity Feedlots – United States

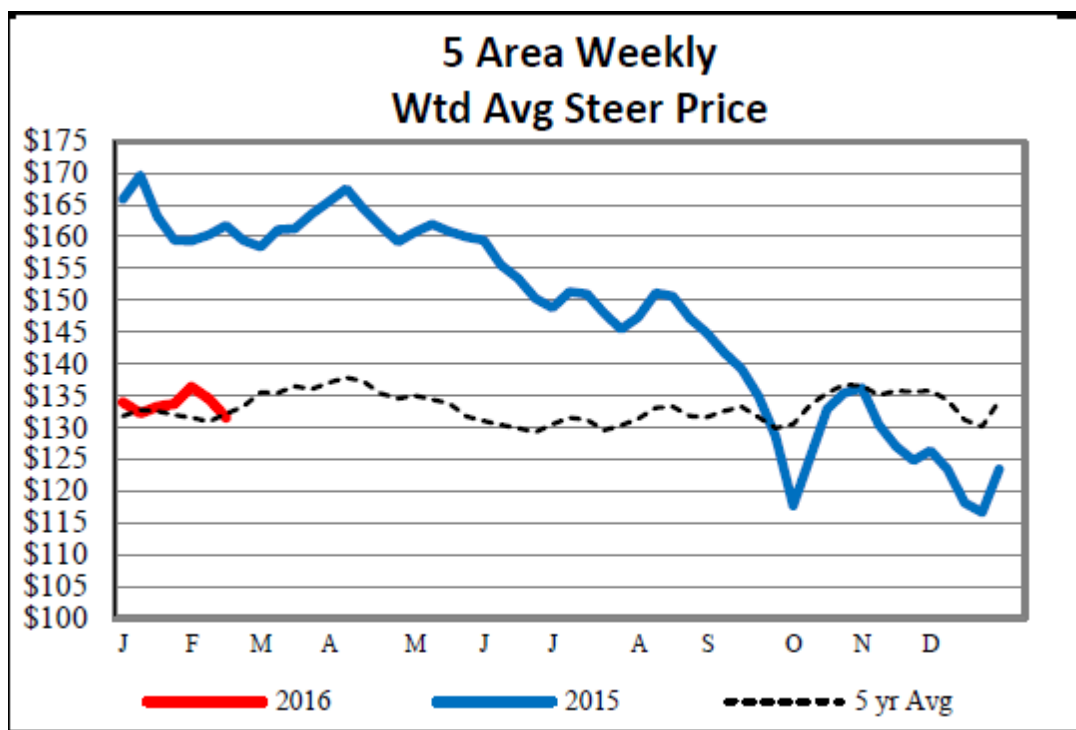
Million head

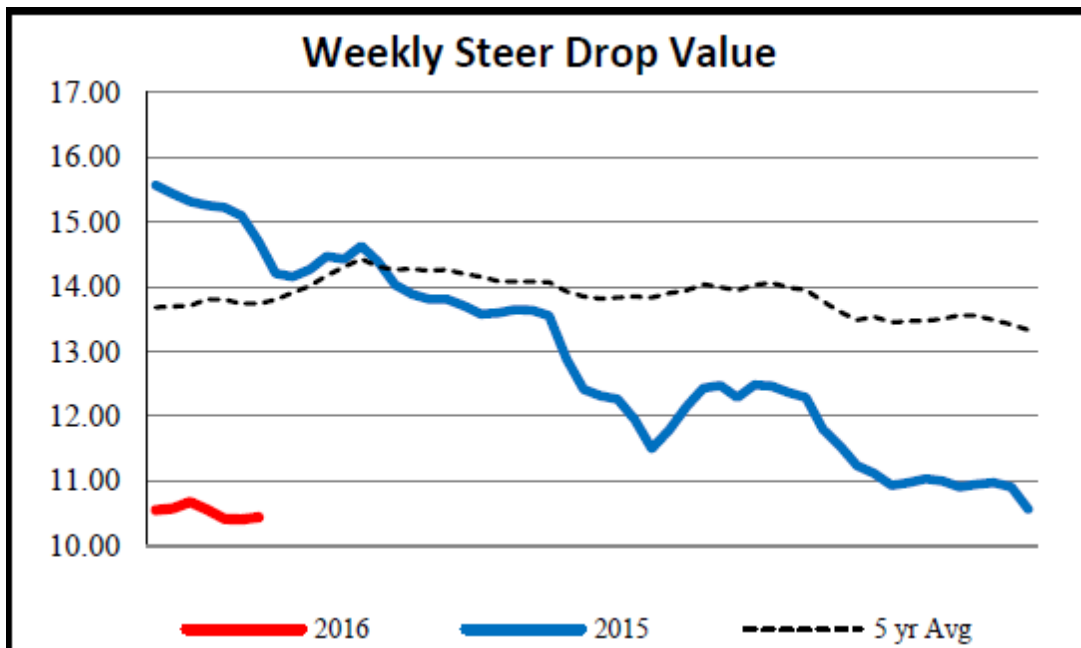


**Weekly Estimated Slaughter Statistics
Weekly Livestock, Meat and Grain Highlights
([Available Here](#))
As of February 8, 2016**

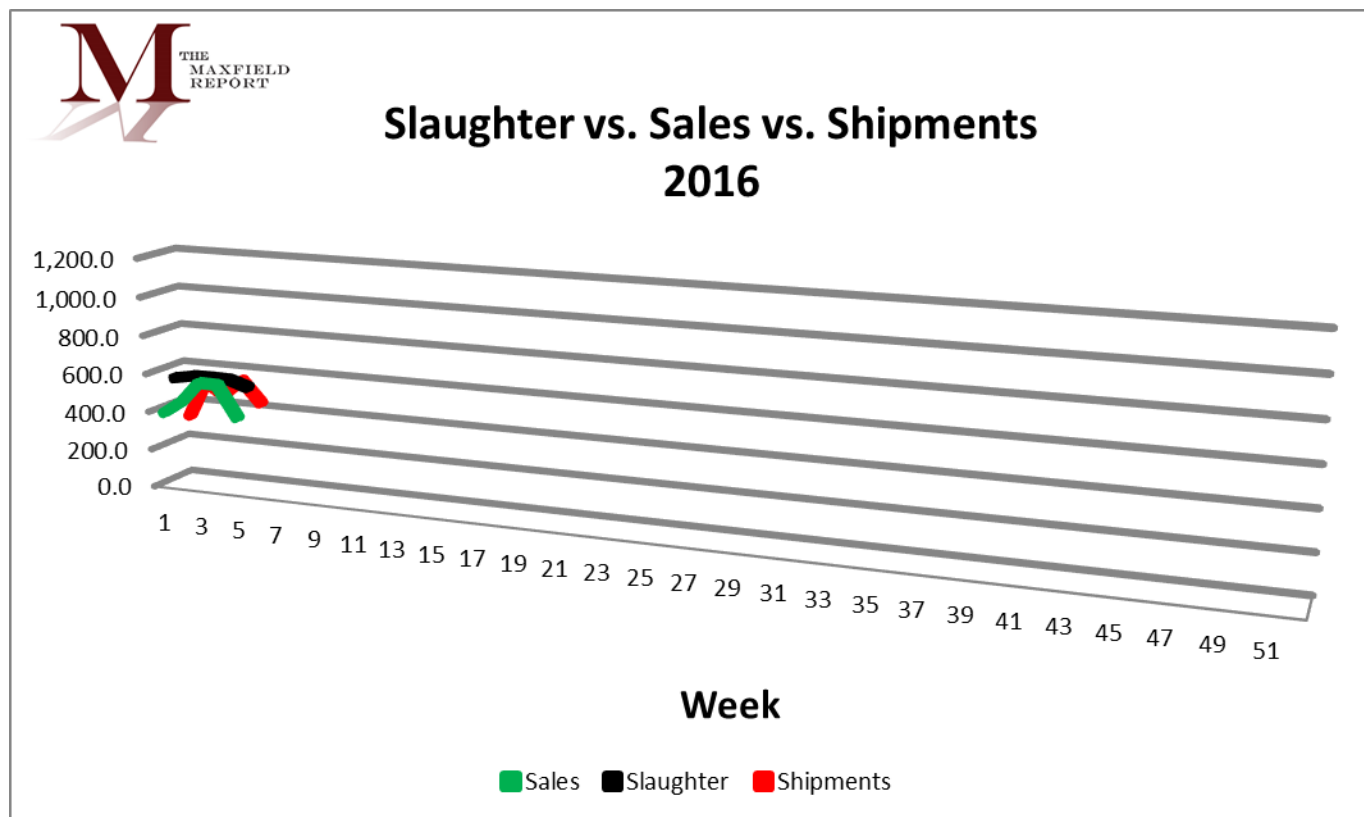
	This Week	Change from Last Week	Change from Year Ago
Hogs			
Weekly Est. Hog Slaughter	2,182,000	-6.3%	-3.4%
YTD. Est. Hog Slaughter	11,860,000		-0.8%
Cattle			
Weekly Est. Cattle Slaughter	534,000	25.3%	-2.2%
YTD Est. Cattle Slaughter	2,849,000		-2.5%

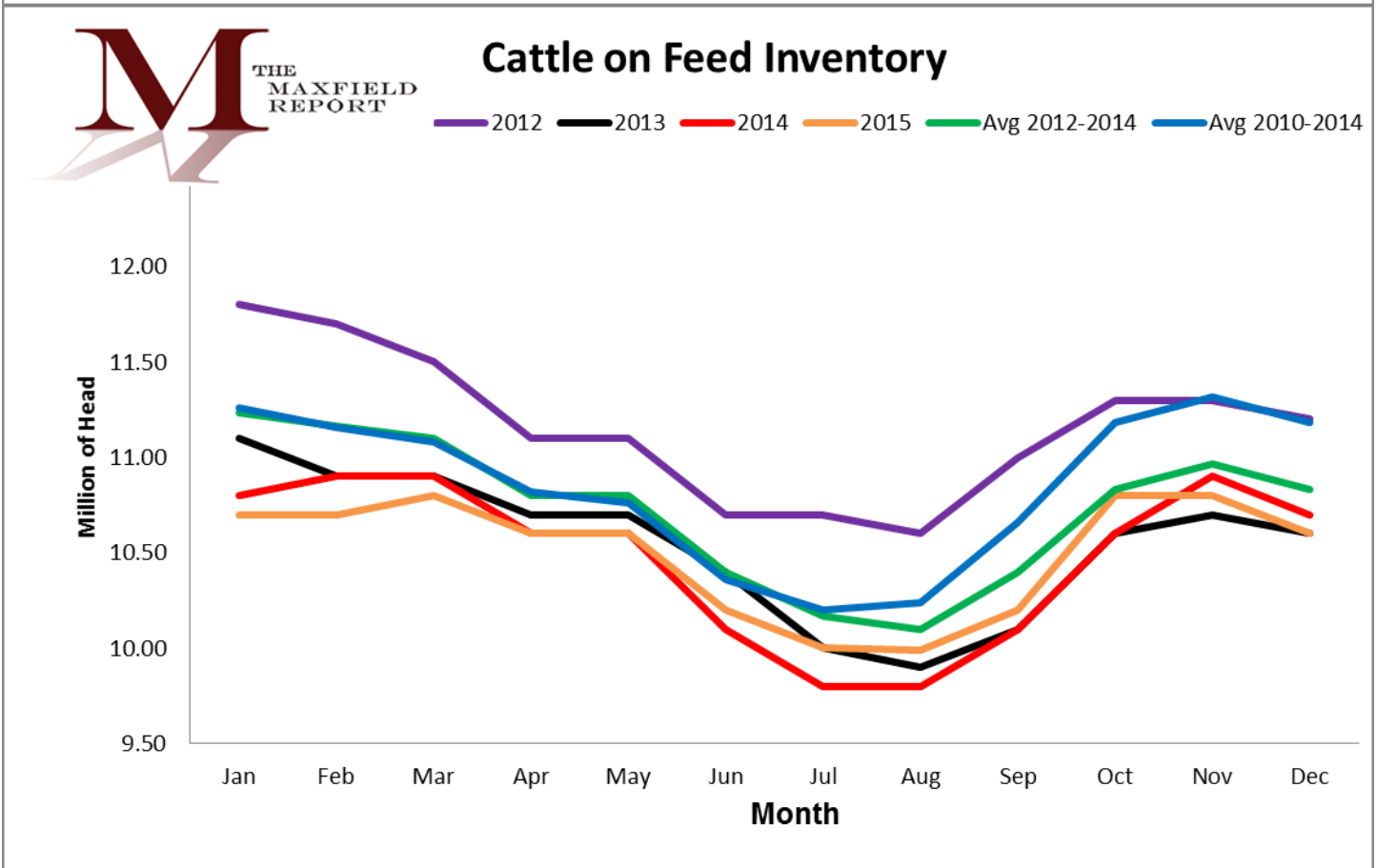
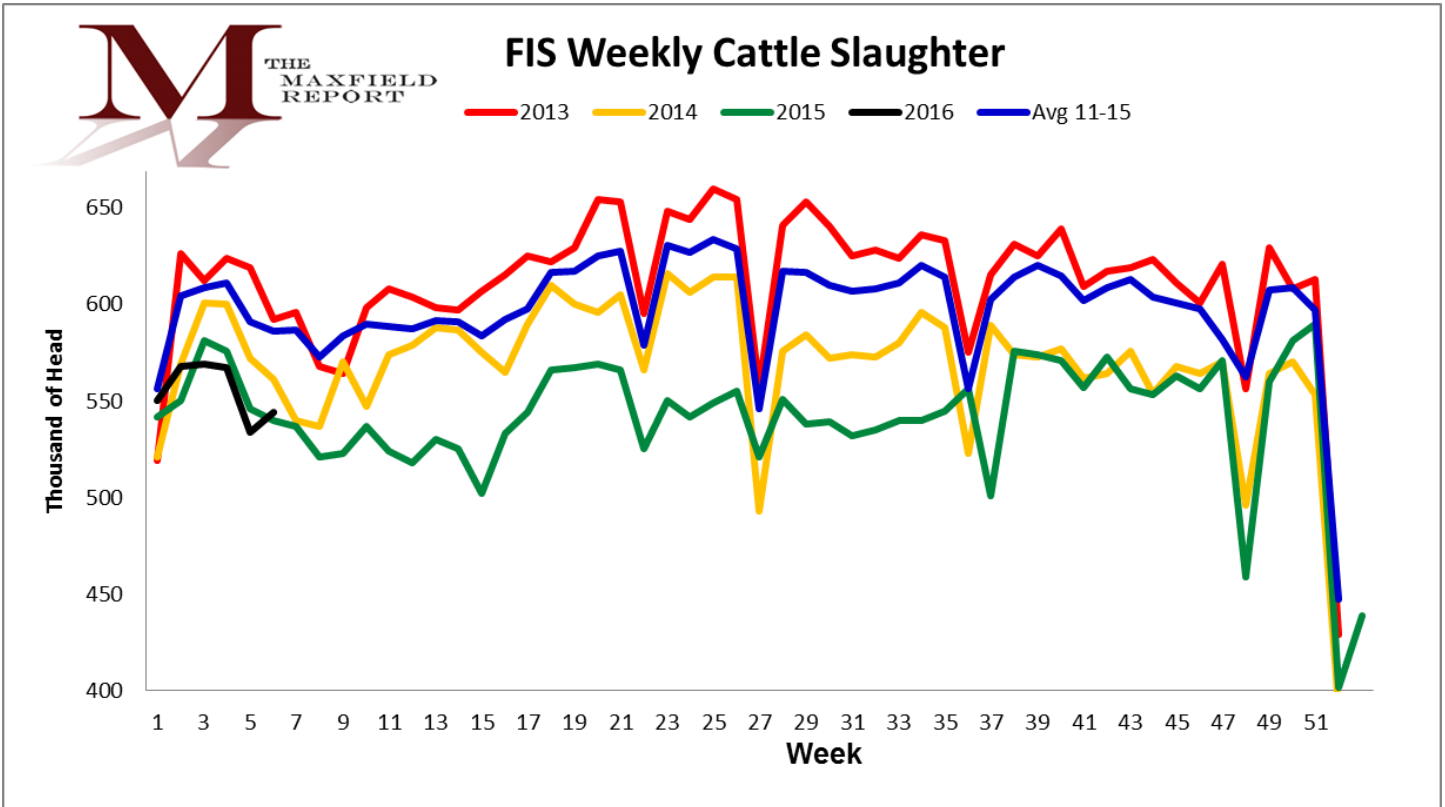
**([Charts Available Here](#))
As of February 12, 2016**





Charts Courtesy of the Maxfield Report:





USDA Weekly Export Sales Statistics
For the Week Ending February 4, 2016
([Available Here](#))

Hides and Skins: Net sales of 291,600 pieces for 2016, all whole cattle hides were down 22 percent from the previous week and 18 percent from the prior-4 week average. Increases were primarily for China (211,300 pieces), South Korea (34,800 pieces), Taiwan (18,700 pieces), and Mexico (12,200 pieces). Reductions were reported for Hong Kong (100 pieces) and India (100 pieces). Exports of 325,100 pieces were down 27 percent from the previous week, but unchanged from the prior 4-week average. Whole cattle hide exports of 321,500 pieces were primarily to China (220,800 pieces), South Korea (33,600 pieces), Mexico (30,500 pieces), Taiwan (13,700 pieces), and Thailand (8,700 pieces).

Net sales of 106,700 wet blues for 2016 down 45 percent from the previous week and 24 percent from the prior 4-week average. Increases were reported for Vietnam (28,300 unsplit and 11,900 grain splits), China (29,600 unsplit and 5,100 grain splits), Hong Kong (18,000 grain splits), and Italy (15,200 unsplit). Reductions were reported for Mexico (1,000 grain splits and 100 unsplit), South Korea (300 grain splits), Taiwan (200 unsplit), and India (100 grain splits). Exports of 143,000 wet blues up 7 percent from the previous week, but down 6 percent from the prior 4-week average. Exports were primarily to China (34,600 unsplit and 8,900 grain splits), Italy (25,900 unsplit and 3,600 grain splits), Vietnam (23,800 unsplit and 4,700 grain splits), and Mexico (11,700 grain splits and 2,700 unsplit). Net sales of splits totaling 213,600 pounds for 2016 were reported for China (211,500 pounds) and Vietnam (43,000 pounds). Reductions were reported for South Korea (40,800 pounds). Exports of 2,118,600 pounds were reported to China (914,600 pounds), Vietnam (690,200 pounds), South Korea (413,800 pounds), and Taiwan (100,000 pounds).

WEEKLY NET SALES ACTIVITY COUNTRY	WHOLE				WET BLUES		
	CATTLE HIDES 1601	CALF SKINS 1602	KIP SKINS 1603	CROUPONS 1604	UNSPLIT 1606	GRAIN SPLIT 1607	DROP SPLITS 1608
	THOUSAND UNITS						
ITALY	1.3				15.2		
JAPAN	1.2						
TAIWAN	18.7				-0.2		
CHINA	211.3				29.6	5.1	211.5
INDIA	-0.1					-0.1	
HG KONG	-0.1					18.0	
KOR REP	34.8					-0.3	-40.8
THAILND	8.3				0.1		
VIETNAM	3.9				28.3	11.9	43.0
BRAZIL							
MEXICO	12.2				-0.1	-1.0	
NET SALES	291.6	0.0	0.0	0.0	73.0	33.7	213.6
WEEKLY EXPORTS	321.5	0.0	3.7	0.0	109.3	33.7	2,118.6
ACCUM. EXPORTS	1,600.0	0.0	30.3	0.0	503.7	248.6	7,218.2
OUTSTANDING SALES	3,068.2	6.5	20.9	0.0	560.9	581.2	6,572.9