



March 2014

# USHSLA INFO EXCHANGE

1150 Connecticut Ave NW, 12<sup>th</sup> Floor, Washington, DC 20036  
www.ushsla.org (202) 587-4250

## Trade Statistics

### Export Numbers for U.S. Bovine Fresh/Wet Salted Hides Number of Pieces/Thousand \$U.S.\*

	Number of Pieces			Value Thousand \$		
	January 2013	January 2014	% Chg	January 2013	January 2014	% Chng
<b>World</b>	2,826,495	3,076,558	9%	149,635	157,087	5%
<b>China/HK</b>	1,606,605	1,883,588	17%	87,909	100,509	14%
<b>Korea</b>	653,272	522,116	-20%	35,801	26,720	-25%
<b>Taiwan</b>	166,884	213,792	28%	9,365	10,303	10%
<b>EU-28</b>	77,501	200,479	159%	3,043	6,960	129%
<b>Mexico</b>	134,388	113,917	-15%	6,513	5,942	-9%
<b>Thailand</b>	40,714	32,196	-21%	2,269	1,772	-22%
<b>Turkey</b>	30,289	30,516	1%	242	1,568	548%
<b>Vietnam</b>	33,184	31,997	-4%	1,731	1,469	-15%
<b>Japan</b>	63,969	35,110	-45%	2,155	1,400	-35%
<b>Israel</b>	7,520	6,113	-19%	100	162	62%
<b>Pakistan</b>	0	2,275	-	0	116	-
<b>Colombia</b>	0	2,299	-	0	69	-
<b>Canada</b>	7,113	1,625	-77%	419	68	-84%
<b>Bahamas</b>	0	365	-	0	18	-
<b>Australia</b>	0	170	-	0	10	-

\*\*Source: USDA Foreign Agricultural Service GATS, U.S. Census Bureau. **PLEASE NOTE:** U.S. Census Bureau estimates the quantity of hides and skins exported based on the declared VALUE of a shipment. Therefore, the above QUANTITIES or NUMBER OF PIECES are over-inflated due to very high export values in 2013. U.S. Census is investigating these discrepancies.

### Export Numbers for U.S. Pig Skins

Number of Pieces/Thousand \$U.S.

	Number of Pieces			Value Thousand \$		
	January 2013	January 2014	% Chg	January 2013	January 2014	% Chng
<b>World Total</b>	416,695	475,652	14%	4,745	4,521	-5%
<b>Mexico</b>	226,112	190,973	-16%	2,646	2,178	-18%
<b>Taiwan</b>	114,739	170,280	48%	1,467	1,282	-13%
<b>Vietnam</b>	28,600	69,499	143%	268	679	153%
<b>Thailand</b>	16,000	27,400	71%	155	276	78%
<b>EU-28</b>	21,000	17,500	-17%	156	106	-32%

### Export Numbers for U.S. Wet Blue Hides

Number of Pieces/Thousand \$U.S.\*\*

	Number of Pieces			Value Thousand \$		
	January 2013	January 2014	% Chg	January 2013	January 2014	% Chng
<b>World Total</b>	1,206,338	1,256,389	4%	65,329	68,744	5%
<b>China/HK</b>	396,985	440,516	11%	22,028	25,141	14%
<b>EU-28</b>	279,218	233,798	-16%	16,954	13,842	-18%
<b>Vietnam</b>	61,041	150,489	147%	3,572	9,295	160%
<b>Mexico</b>	205,712	177,762	-14%	5,565	6,433	16%
<b>Taiwan</b>	73,255	92,953	27%	4,506	4,625	3%
<b>Thailand</b>	5,359	51,828	867%	307	3,286	970%
<b>Dom. Rep.</b>	102,758	47,958	-53%	7,671	2,663	-65%
<b>Uruguay</b>	54,674	35,136	-36%	3,234	1,946	-40%
<b>India</b>	6,813	14,911	119%	647	853	32%
<b>Japan</b>	16,923	6,153	-64%	823	427	-48%

**\*Source: USDA Foreign Agricultural Service GATS; U.S. Census Bureau. Please note, wet blue numbers include cattle/equine full grains, top grains and drop splits combined, and also employ estimates.**

## Cattle on Feed Summary

National Agricultural Statistics Service, USDA

[\(Available Here\)](#)

Released February 21, 2014

### United States Cattle on Feed Down 3 Percent

**Cattle and calves on feed** for slaughter market in the United States for feedlots with capacity of 1,000 or more head totaled 10.8 million head on February 1, 2014. The inventory was 3 percent below February 1, 2013.

**Placements in feedlots** during January totaled 2.03 million, 9 percent above 2013. Net placements were 1.96 million head. During January, placements of cattle and calves weighing less than 600 pounds were 470,000, 600-699 pounds were 440,000, 700-799 pounds were 560,000, and 800 pounds and greater were 559,000.

**Marketings** of fed cattle during January totaled 1.79 million, 5 percent below 2013.

**Other disappearance** totaled 71,000 during January, 10 percent below 2013.

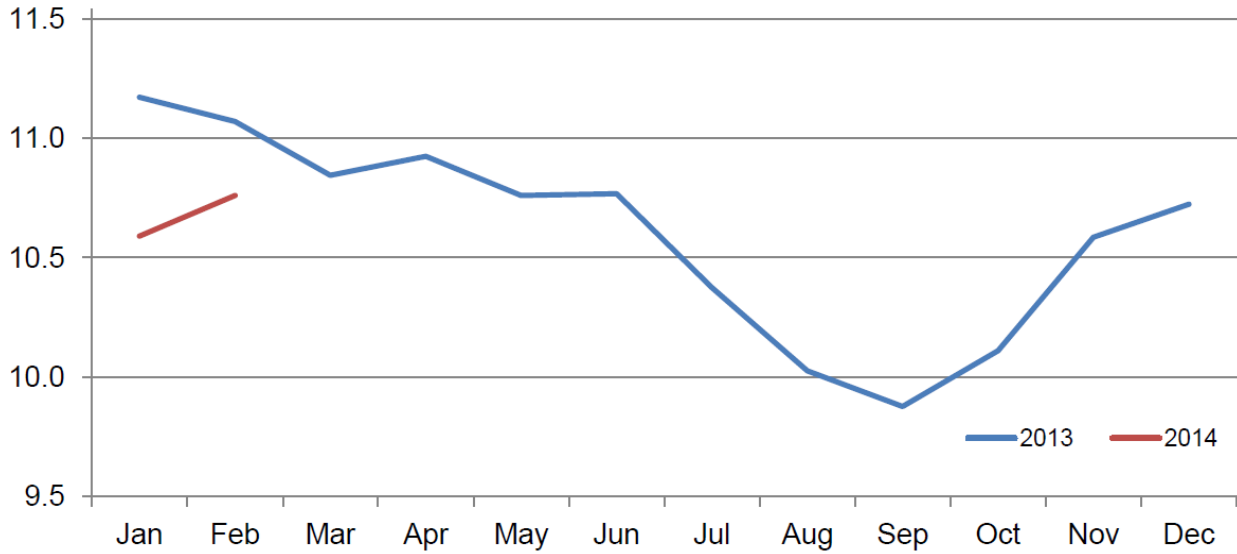
### 2013 Cattle on Feed and Annual Size Group Estimates

**Cattle and calves on feed for** slaughter market in the United States for feedlots with capacity of 1,000 or more head represented 83.4 percent of all cattle and calves on feed in the United States on January 1, 2014, down from 83.8 on January 1, 2013.

**Marketings** of fed cattle for feedlots with capacity of 1,000 or more head during 2013 represented 87.8 percent of all cattle marketed from feedlots in the United States, down from 88.5 percent during 2012.

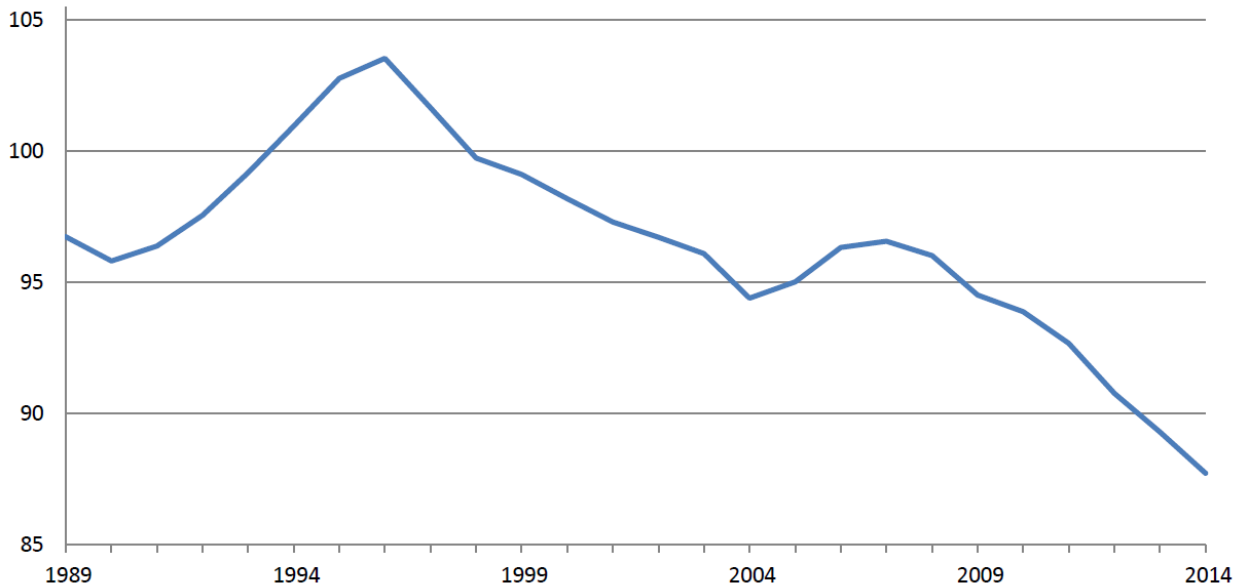
### Cattle on Feed Inventory on 1,000+ Capacity Feedlots – United States

Million head



### Cattle Inventory – United States: January 1

Million head



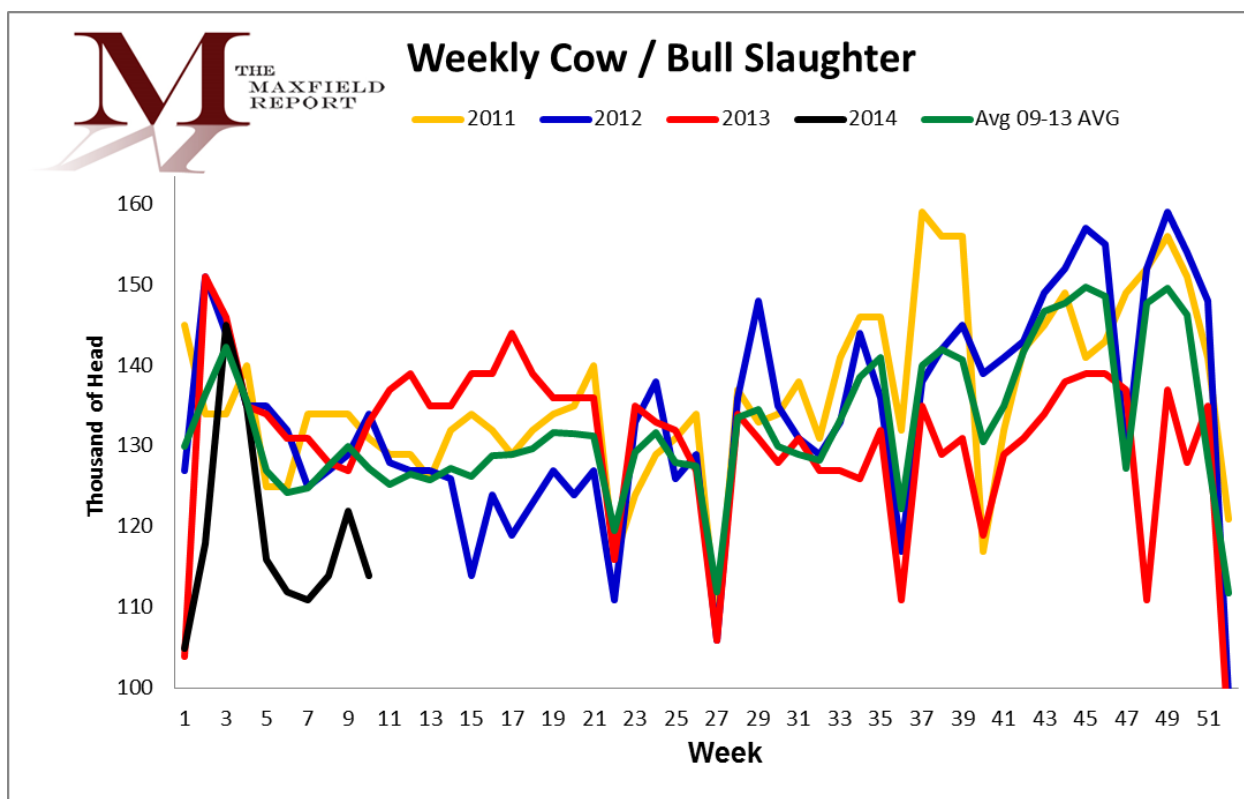
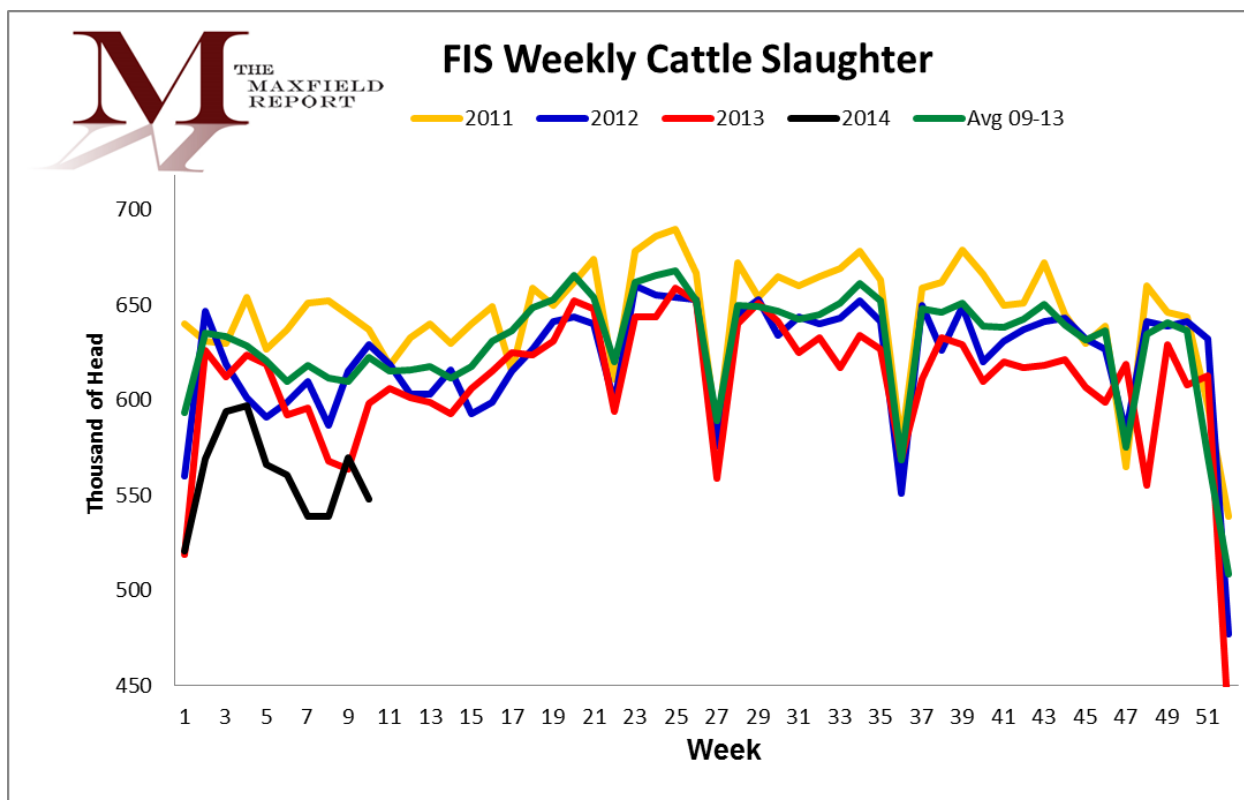
**2014 Actual Slaughter Under Federal Inspection**  
**([Available Here](#))**

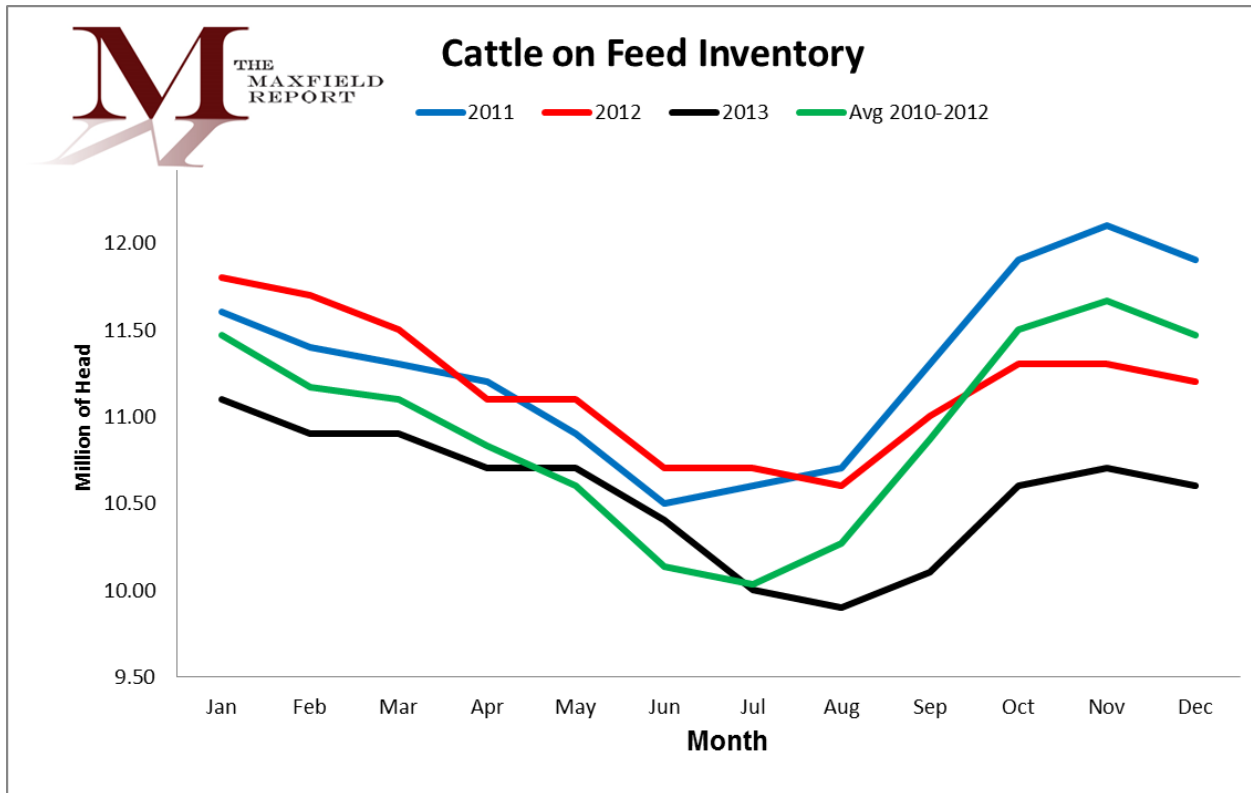
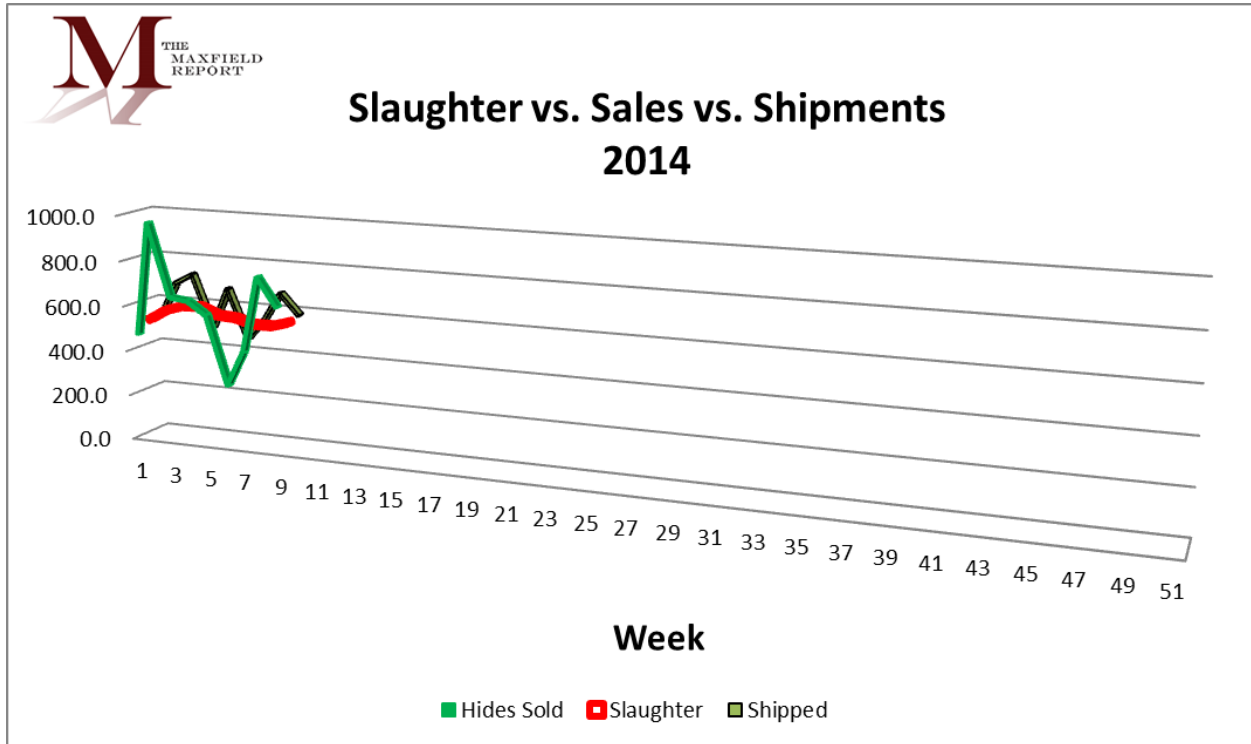
	<b>Total Cattle (Thou. Hd)</b>	<b>Beef Production (Mil Lbs)</b>	<b>Av. Live Weight (Lbs)</b>	<b>Av. Dressed Weight (Lbs)</b>
Jan 1 – March 7, 2014	5,605	4,492.9	1,337	803
% changed from 2013	-5.3%	-4.8%	0.8%	0.5%

**Weekly Estimated Slaughter Statistics**  
**Weekly Livestock, Meat and Grain Highlights**  
**([Available Here](#))**  
**As of March 10, 2014**

	<b>This Week</b>	<b>Change from Last Week</b>	<b>Change from Year Ago</b>
<b>Hogs</b>			
Weekly Est. Hog Slaughter	2,072,000	-3.9%	-5.7%
YTD. Est. Hog Slaughter	20,473,000		-3.0%
<b>Cattle</b>			
Weekly Est. Cattle Slaughter	548,000	-3.9%	-8.4%
YTD Est. Cattle Slaughter	5,393,000		-7.6%

Charts Of Note Courtesy of The Maxfield Report





## USDA Weekly Export Sales Statistics For the Week Ending February 27, 2014 ([Available Here](#))

**Hides and Skins:** Net sales of 522,700 pieces for 2014 were down 19 percent from the previous week, but up 27 percent from the prior 4-week average. Whole cattle hides sales of 500,900 pieces were primarily for China (378,800 pieces), South Korea (53,400 pieces), Taiwan (38,100 pieces), Mexico (11,200 pieces), and Hong Kong (10,000 pieces). Exports of 464,800 pieces were down 18 percent from the previous week, but up 3 percent from the prior 4-week average. Whole cattle hides exports totaled 460,600 pieces, with the primary destinations being China (294,000 pieces), South Korea (81,500 pieces), Taiwan (38,100 pieces), Mexico (13,900 pieces), and Japan (11,300 pieces).

Net sales of 144,900 wet blues for 2014 were reported for Vietnam (62,200 unsplit), China (35,500 unsplit and 100 grain splits), Italy (15,900 grain splits and 500 unsplit), and Mexico (14,400 grain splits). Exports of 109,200 wet blues were primarily to China (19,700 unsplit and 2,100 grain splits), Mexico (22,000 grain splits and 3,800 unsplit), Vietnam (16,000 unsplit), Italy (12,100 unsplit and 3,800 grain splits), and Taiwan (12,200 unsplit). Net sales reductions of splits totaling 107,300 pounds for 2014 resulted as increases for Hong Kong (10,500 pounds), were more than offset by decreases for South Korea (100,700 pounds) and Vietnam (17,200 pounds). Exports of 964,400 pounds were reported to Vietnam (412,200 pounds), Hong Kong (292,900 pounds), and South Korea (259,300 pounds).

WEEKLY NET SALES ACTIVITY COUNTRY	WHOLE				WET BLUES		
	CATTLE HIDES 1601	CALF SKINS 1602	KIP SKINS 1603	CROUPONS 1604	UNSPLIT 1606	GRAIN SPLIT 1607	DROP SPLITS 1608
	THOUSAND UNITS						
GERMANY	0.6						
ITALY	0.4				0.5	15.9	
NETHLDS			21.8				
SLOVENIA	--0.1						
JAPAN	7.4					--0.1	
TAIWAN	38.1				6.1	2.6	
CHINA	378.8				35.5	0.1	
INDIA						2.1	
HG KONG	10.0						10.5
KOR REP	53.4					0.1	--100.7
THAILND	--0.1				5.6		
VIETNAM	1.3				62.2		--17.2
MEXICO	11.2					14.4	
NET SALES	500.9	0.0	21.8	0.0	109.9	35.0	--107.3
WEEKLY EXPORTS	460.6	0.0	4.2	0.0	76.1	33.1	964.4
ACCUM. EXPORTS	3,642.4	0.0	40.2	0.0	756.1	267.3	4,781.5
OUTSTANDING SALES	3,007.3	6.7	57.1	0.0	495.6	162.4	4,105.7